



# Trusted Global Life Sciences Partner

**FSP | MSP | Staffing | Digital | Medical Devices**



# ALTEN Group

## Leader in Engineering and IT Services

ALTEN supports its customers' development strategies in the areas of innovation, R&D, and technological information systems.

Created more than 30 years ago and based in 30 countries, the Group has established itself as a world leader in Engineering and IT Services. We work with key actors in the

Aeronautics & Space, Defense & Naval, Security, Automotive, Rail, Energy, Life Sciences, Finance, Retail, Telecommunications and Services sectors.

With a financial turnover of more than \$ 4 billion, we currently have more than 52,700 employees all over the world.

### Within 30 years, ALTEN has become leader in both outsourced Engineering and IT Enterprise Services.

ALTEN, composed of 88% engineers, carries out complex and highly technical projects throughout the value chain of the most prestigious companies in all sectors of industry, services and telecommunications.

 <b>Employees</b> <b>52,700</b>	 <b>Clients</b> <b>6,500</b>	 <b>2022 Turnover</b> <b>\$ 4 B</b>	 <b>Countries</b> <b>30+</b>
--	--	---	--

### Awards & Accolades

# ACL Digital

ACL Digital is a leading technology service company recognized worldwide for delivering cutting-edge engineering and IT solutions. Our expertise and excellence in Digital Experience, Product Innovation, and Consulting services equip businesses with the fuel to drive into the digital future.

ACL Digital, an ALTEN Group Company, is committed to enabling transformation while keeping customer journeys and high-end design

at core. Thousands of businesses worldwide trust ACL Digital to bring in competitive advantage, extraordinary innovation, and revolutionary solutions for complex industry challenges.

We are a talented workforce, and part of the 42,000+ employee ALTEN Group headquartered in the Silicon Valley in California, spread across more than 30 countries, offering a multicultural workplace and a collaborative knowledge environment.

## Digital Engineering & Transformation Company

ACL Digital is a pioneer in design-led Digital Experience, Innovation, Enterprise IT Modernization, and Product Engineering Services.

We help organizations accelerate product development by leveraging digital technologies, monetizing services, modernizing technology platforms, and providing immersive total experience solutions.



**30+ years**

of Sustained Growth



**10+ years**

Partnership with ALTEN



**10+ Locations**

Offshore Development Centers



**6500+**

Strong Digital Engineering Team



**400+**

Customers Worldwide



**25+**

Strategic Partnerships

## Our Strategic Partnerships to Fuel Delivery





# ACL Digital Life Sciences

ACL Digital Life Sciences has one of the largest pools of qualified resources in multiple functional areas, who are well-equipped to deliver comprehensive state-of-the-art Services and Solutions across the entire Life Sciences domain.

## Our Offerings include



### **FSP, MSP, and Staffing**

Your all-weather staffing partner. We offer flexible models to support your requirements. ACL Digital Life Sciences has access to one of the largest pools of qualified resources in multiple functional areas.



### **Digital Services and Solutions**

Integrating digital transformation in Healthcare and Life Sciences. Solutions include biometrics dashboard, AI/ML solutions, and custom software and applications within the clinical space.



### **Medical Devices Hardware and Software**

including Remote Patient Monitoring (e-diaries, IoT, wearables)

# Life Sciences Staffing and Services

## **MSP and contingent staffing, project-based FSP, full-service FSP, and offshoring models**

ACL Digital Life Sciences has a track record of partnering successfully with some of the leading Pharmaceuticals, Biotech companies, CROs, Medical Devices, and MSP companies.

We offer multiple sourcing models to suit your business needs. We work with an MSP of your choice, insourcing staff augmentation, insourcing and outsourcing FSP models, and Project-based deliverables.

We do this to provide you with the flexibility you need - whether it's for onsite or remote resources, long-term or project-specific resources, SME consultation, resources available across

multiple geographic areas, resources mapping US time zones, or working off-hours in local time zones, among other requirements.

## **Our areas of staffing include:**

- BioStats
- Statistical Programming
- Clinical Data Management
- Pharmacovigilance
- Medical Writing
- Regulatory Affairs
- QA and Validation
- Other areas in Clinical Development

# Client Engagement Models



## Staff Augmentation (Insource / MSP)

### Client retains:

- Full ownership and direction of projects
- Management and assignment of all tasks

### Resources:

- Utilize sponsor's SOPs, systems and tools
- Remote-based, or onsite (client or ACL Digital Life Sciences)
- North America and Europe

### ACL Digital Life

#### Sciences:

- Handles all employment matters
- HR
- Payroll
- Work visas

#### Contract:

- Resource-based / One-year renewable



## FSP (Insource)

### Client retains:

- Full ownership and direction of project

### ACL Digital Life

#### Sciences:

- Liaises with client manager, or let client manage resources

#### Resources:

- Utilize client's SOPs, systems, and tools
- Remote-based, onsite (client or ACL Digital Life Sciences site)
- Onshore or Off-shore / India (cost advantage)

### ACL Digital Life

#### Sciences:

- Handles all employment matters
- HR
- Payroll
- Work visas

#### Contract:

- Resource-based / One-year renewable



## FSP (Outsource)

### Client retains:

- Full ownership and direction of project

### ACL Digital Life

#### Sciences:

- Liaises with client manager
- Assigns tasks to resources – Typically complete functional team

#### Resources:

- Utilize ACL Digital Life Sciences SOPs, systems and tools
- Remote-based, or at ACL Digital Life Sciences site (On shore or Off-shore / India (cost advantage))

### ACL Digital Life

#### Sciences:

- Handles all employment matters
- HR
- Payroll
- Work visas

#### Contract:

- Resource-based or Milestone-based / One-year renewable



## Project-work (Outsource)

### ACL Digital Life Sciences:

- Has full project ownership
- Complete line management responsibility
- Assigns workload and determines resource allocation
- Utilized ACL SOPs, systems, and tools
- Can be remote-based or work onsite at ACL Digital Life Sciences site
- Onshore or Off-shore / India (cost advantage)

### ACL Digital Life

#### Sciences:

- Handles all employment matters
- HR
- Payroll
- Work visas

#### Contract:

- Milestone / Deliverables-based

# Digital Services & Solutions, Innovation Labs

The solution innovation team at ACL Digital Life Sciences works with biotechnology, pharmaceuticals, medical device companies, and CROs to understand the day-to-day challenges, cost optimization goals, the need for aggressive digital transformation, and a staggering pace of healthcare evolution.

Our seasoned transformation consultants apply their first-hand knowledge and expertise in strategy and execution gained outside and inside the industry to solve complex problems. We harness the power of data, capitalize on new technologies, transform into intelligent operations, master customer experience design, and build customer-centric digital talent and culture, while adhering to industry regulations in a highly regulated environment.



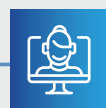
## QInsight Dashboard

ClinOps and Clinical Trials data reporting dashboards designed to get better insight of data



## Biopharma Ledger

Realtime Consolidated and Single Source of encrypted, Transparent, Immutable Patient Data Platform



## Remote Patient Monitoring

IoT enabled wearables



## Network Efficiency

- SAP for high-speed Packet Traffic Aggregation / Dis-aggregation
- Ultra-low Latency and High Bandwidth Interconnect
- Clutter-free Physical connectivity



## Clinical Trials Automation

Digital automation into the drug and device development to transform trials by:

- Capturing routine clinical data (patient vital signs)
- Collecting operational data, such as drug administration dose and time
- Assessing potential data entry errors, such as duplicated or missing data points



## SAS SCE

- Cloud based secure computing environment with validated SAS, R, scripting and other utilities
- Customizable file share, centralized and secure, ready for data warehouse, data lake setup
- Plug-in SAS macros for clinical trial data reporting/analysis

# Medical Devices Hardware and Software

Multidisciplinary Capabilities across Hardware, Firmware, Software, V&V, and Product Engineering

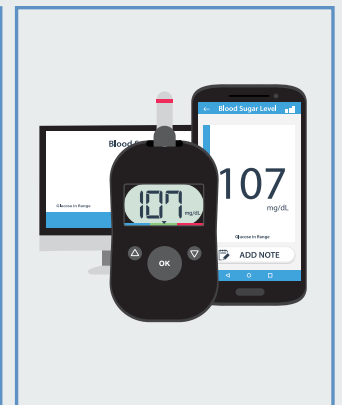
## Digital Healthcare & Product Engineering Expertise

ACL Digital Product Engineering practice has helped multiple Healthcare, Pharma & Life Sciences, Medical device companies to design, develop, and verify medical device software for providing diagnostic and therapy solutions.

- Application Software
- Remote Patient Monitoring
- Mobile, Hardware & Embedded V&V
- Regulatory Standards
- Connectivity Enablement

## Application Software

- Product Engineering, Cloud, DevOps, DevSecOps and MLOps
- Medical Imaging – Product Engineering, AI/ML & Imaging Analytics, Workflow Optimization
- Clinical Data Engineering – Data modernization, Data Warehouse, Data Lakes, Cloud-based and Data Quality
- Patient & Physician Engagement – Digital and Mobile health, Tele-health, Patient Portals and Clinical Decision Support
- Health IT Interoperability – IoT, Device Integration and Data Interoperability



## Mobile, Hardware & Embedded V&V



- Native, Web, and Hybrid Patient and Clinician Application Development on Android, iOS
- Test Framework Development and Automation
- Data Communication over Bluetooth, BLE, USB, Zigbee, MQTT, RS 232, or Wi-fi
- Test Strategy, Definition & Protocols
- Compliance & Certification Firmware, Embedded, Hardware Design & Engineering

## Connectivity Enablement

- Wireless enablement of devices using technologies like Bluetooth, BLE, ZigBee, Wi-Fi, GSM/GPRS
- Device communication using RS232 or USB interfaces
- Data transfer to back-end systems using various protocols such as SSL, HTTP, SOAP, TCP/IP



## Remote Patient Monitoring



- Device Data Collection using Standard Protocols
- Alerts, Alarms Generation and Notification
- Data Management and Reporting
- Data Security and Privacy Handling
- Integration with EMRs/EHRs, PHMs and Business Systems
- Patient - and clinician - centric Portals and Apps

## Regulatory Standards

- HL7, DICOM, CCHIT, HIPAA, and Meaningful Use
- Smart on FHIR Interoperability
- FHIR Framework supporting REST, Documents, Messages & Services
- Device Connectivity and Workflow Automation using IHE, IEEE 11073, HL7, and DICOM standards
- Federal & State Reporting
- ISO 13485, ISO 14971 and ISO 62304



# ACL Digital Life Sciences

## Your Trusted Partner for all Life Sciences Staffing and Services

Contingent & MSP staffing, project-based FSP, full-service FSP, and offshoring models

## Integrating Digital Transformation in Healthcare and Life Sciences

Realize the full value of your medical innovations by leveraging our talent and industry expertise

## Access to One of the Largest Pools of Qualified Resources in Multiple Functional Areas

1000+ functional and technology consultants, 250+ SAS certified programmers, 100+ clinical data managers

## Strong Technical Community Involvement

Check out our recent R Programming for Biometrics Professionals webinar

ACL Digital is a design-led Digital Experience, Product Innovation, Engineering and Enterprise IT offerings leader. From strategy, to design, implementation and management we help accelerate innovation and transform businesses. ACL Digital is a part of ALTEN group, a leader in technology consulting and engineering services.

[business@acldigital.com](mailto:business@acldigital.com) | <https://www.acldigital.com/life-sciences>

USA | UK | France | India   

Tel: +91 44 4595 9208

Proprietary content. No content of this document can be reproduced without the prior written agreement of ACL Digital.