

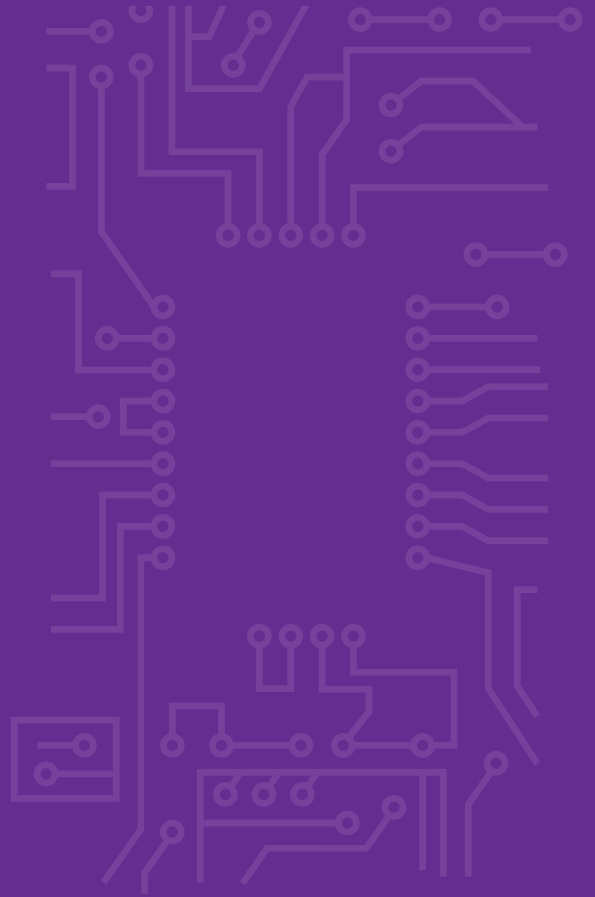
ACL SD-WAN CONTROLLER

Overview

- › Enterprises are adapting newer technologies to achieve business agility. Connecting various enterprise users, clients, partners to provide access for various cloud offerings over wan in a secure way is becoming crucial.
- › The traditional wan networking technologies are complex and takes months to provide wan connectivity across business sites. The technology is moving more towards software/cloud centric to reduce the capex and opex of an organization.
- › Software-defined wan simplifies and automates the way networks are designed, deployed and managed. Sd-wan solution establishes secure overlay transport irrespective of the underlay transport by the various internet service providers.
- › ACL SD-WAN solution defines on-demand, end-to-end, flexible, economic, policy-based way of network automation to dynamically enable branch site communication for an enterprise, and also enables secure access for various users to applications at private, public and saas clouds.
- › ACL SD-WAN solution offers ipsec vpn services over the various network transport technologies like mpls, internet broadband, 4g, lte, 5g etc at any location.

ACL SD-WAN Feature Highlights

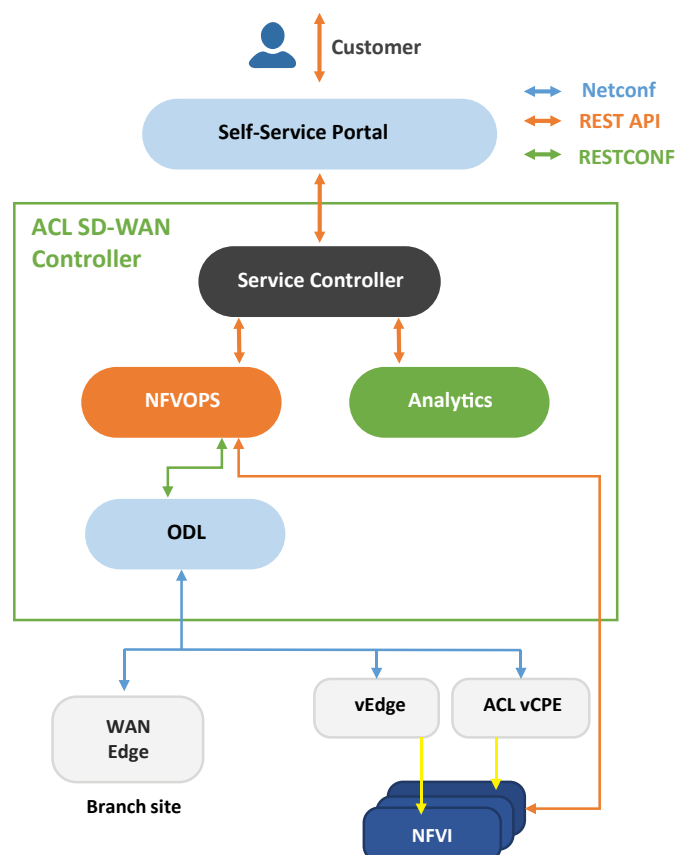
- > API Driven (REST, RESTCONF and NETCONF)
- > Self-Service portal
- > On Demand Branch-Site provisioning
- > On Demand access to private, public and SAAS clouds
- > Design WAN service capabilities
- > Zero Touch Activation
- > Zero Touch Provisioning
- > Application aware QoS
- > Analytics driven Intent Based Policy Management
- > Vendor Agnostic VNF/PNF support
- > vCPE fastpath framework (DPDK Enabled)
- > Real Time Statistics Monitoring and Reporting
- > WAN Service Assurance
- > Optimal path selection on WAN Link Failover



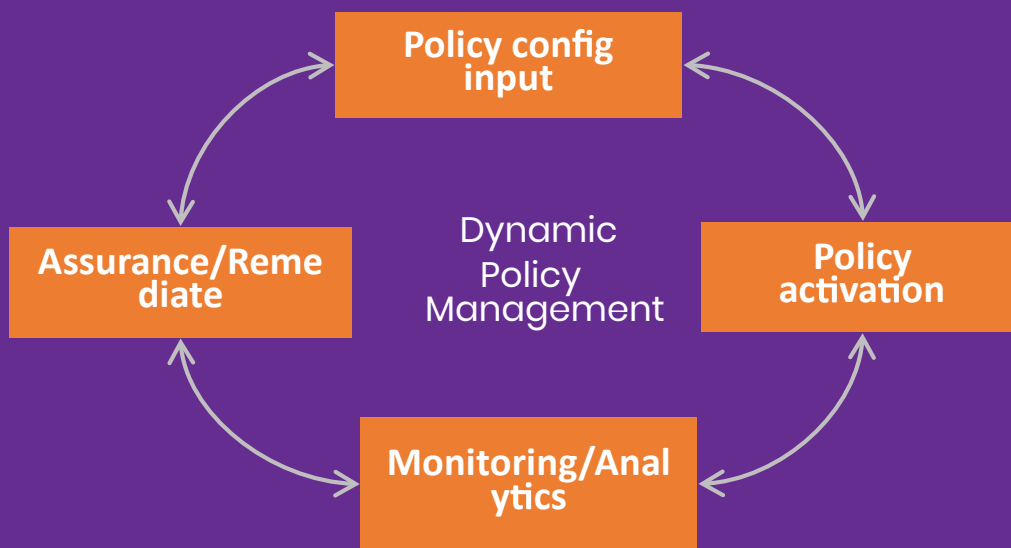
ACL SD-WAN Controller

ACL SD-WAN Controller is an SDN and NFV integrated platform and is logically composed of

- > ACL Service Controller
- > ACL NFVOPS
- > SDN Controller (ODL)
- > ACL vCPE VNF (DPDK enabled)

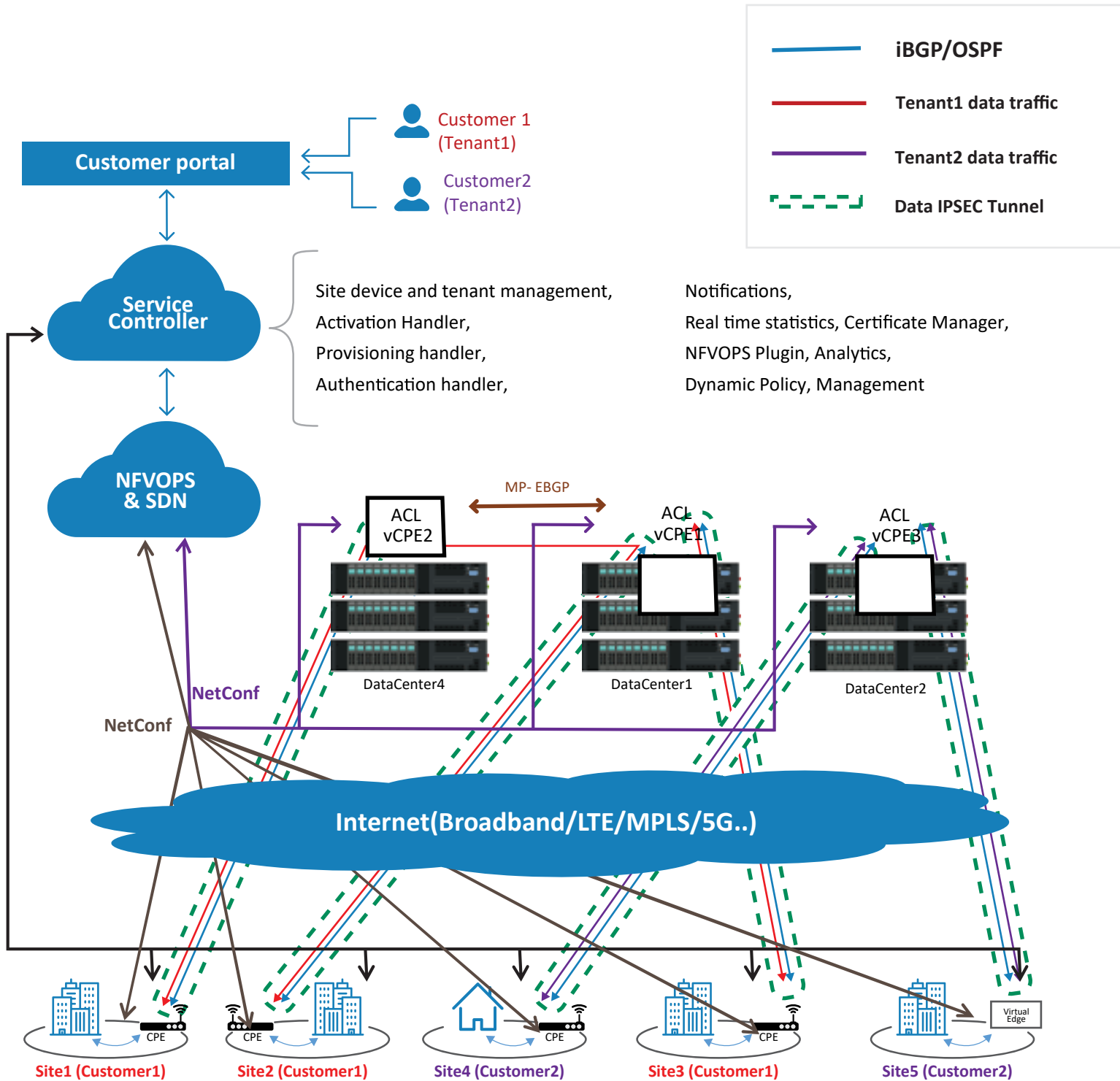


- › ACL SD-WAN Controller is API driven centralized platform holding the WAN service abstraction. This platform provides the ability to design, save and publish the policy-driven WAN service requirements as an order for a site. The requested order contains the business requirements of a WAN service deployment.
- › ACL SD-WAN Controller translates the business requirements and identifies the deployments, service level configurations, WAN application configurations, WAN policy configurations etc.. and initiates the request to ACL NFVOPS.
- › ACL SD-WAN Controller securely enables the zero-touch-activation and zero-touch-provisioning of the uCPE devices(physical or virtual) located at the requested site of a customer.
- › ACL SD-WAN Controller receives the real-time statistics from various sites , analyse and perform the dynamic policy updates if required. This ensures the effective bandwidth utilization for an application over chosen path by a customer.



- › ACL SD-WAN Controller enables the encrypted overlay establishment with virtual/physical edges at branch site location and ACL vCPE VNF (DPDK enabled).
- › ACL SD-WAN solution can be deployed on Openstack and AWS.
- › ACL vCPE VNF is core hub of the SD-WAN solution which enables the secure communication to various branches of an enterprise, users of private, public and SAAS Clouds.
- › ACL vCPE VNF is rich suite of DPDK optimized high performance fast path functions that can be deployed on COTS x86 platforms.
- › ACL vCPE VNF framework offers multi-tenancy by dynamically enabling the control plane and management plane for a tenant in docker containers.
- › ACL vCPE VNF exchanges routes over the secure overlay transport with virtual/physical edges of various branch sites via the dynamic routing protocol, which enables secure communication for various enterprise sites.
- › ACL vCPE VNF with CG-NAT support to enable secure communication for the internet destined traffic from various enterprise sites.
- › ACL SD-WAN solution supports peer-to-peer vCPE communications which are deployed across the data-centers of service provider via dynamic routing protocol.

ACL SD-WAN Deployment Diagram



ACL Digital is a design-led Digital Experience, Product Innovation, Engineering and Enterprise IT offerings leader. From strategy, to design, implementation and management we help accelerate innovation and transform businesses. ACL Digital is a part of ALTEN group, a leader in technology consulting and engineering services.

business@acldigital.com | www.acldigital.com

USA | UK | France | India

